

Краны шаровые стальные кованные METAL STAR

DN8-DN100
PN16-PN150



Назначение и область применения

Краны шаровые **METAL STAR** применяются для абразивных и экстремально высоких температур рабочих сред

Техническая характеристика

Условные проходы DN:

полный проход

неполный проход

Номинальные давления PN

Направление подачи рабочей среды

Температура рабочей среды

Герметичность затвора

Установочное положение крана на трубопроводе

Способ установки на трубопроводе:

Температура эксплуатации

8...50

20...80

16...150

произвольное

от -200°C до +700°C

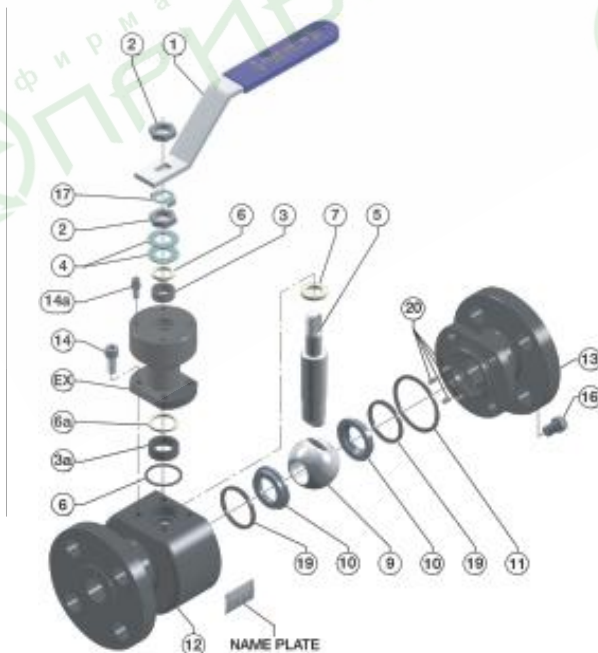
класс А по ГОСТ 9544-93

произвольное

сварка; муфтовое, фланцевое

-60°C...+40°C

КОНСТРУКЦИЯ - МАТЕРИАЛЫ



STARLINE Figure No.	Full Bore	143 MGG	145 MGG	146 MGG
UNIT Q.TY	Reduced Bore	243 MGG	245 MGG	246 MGG
PART NO	PART NAME	MATERIALS A106 / 316	MATERIALS LF2 / 316	MATERIALS 316 / 316
NP 1	NAME PLATE	Stainless Steel	Stainless Steel	Stainless Steel
G 1	EXTENTION GASKET	Graphite	Graphite	Graphite
EX 1	EXTENTION	ASTM A106N	ASTM A350 LF2	ASTM A182 F316
1 1	HANDLE	Stainless Steel + Plastic	Stainless Steel + Plastic	Stainless Steel + Plastic
2 2	HANDLE NUT	C. S. Zinc Plated	Stainless Steel	Stainless Steel
3 3+3	PACKING RING	Graphite	Graphite	Graphite
4 2	SPRING WASHER	Special S.S. for Springs	Special S.S. for Springs	Special S.S. for Springs
5 1	STEM	UNS S31803	UNS S31803	UNS S31803
6 1+1	GLAND PACKING	Stainless Steel	Stainless Steel	Stainless Steel
7 1	THRUST WASHER	Stainless Steel	Stainless Steel	Stainless Steel
9 1	BALL	S.S. 316 Hardnet note 3	S.S. 316 Hardnet note 3	S.S. 316 Hardnet note 3
10 2	SEATS	S.S. 316 Hardnet note 3	S.S. 316 Hardnet note 3	S.S. 316 Hardnet note 3
11 2	BODY GASKET	Graphite	Graphite	Graphite
12 1	BODY	ASTM A 106N	ASTM A305 LF2	ASTM A182 F316
13 1	END CONNECTION	ASTM A106N	ASTM A350 LF2	ASTM A182 F316
14 4	EXTENTION SCREW	Stainless Steel	Stainless Steel	Stainless Steel
14a 1	STOP PIN	Stainless Steel	Stainless Steel	Stainless Steel
16 nota 1	BOLTS	ASTM A193 B8	ASTM A193 B8	ASTM A193 B8
17 1	STOP WASHER	Stainless Steel	Stainless Steel	Stainless Steel
19 2	SEAT SEALS	Graphite	Graphite	Graphite
20 nota 2	SEAT SPRINGS	Inconel X-750	Inconel X-750	Inconel X-750

NOTE:

- For size 1/4" to 1.1/2" n° 4 bolts - For size 2" n° 6 bolts
- For size 1/4" to 1.1/2" n° 4 springs - For size 2" n° 6 springs.
- Surface are coated with tungsten carbide, chrome carbide, stellite 6 and other coated on request

- Suggested materials after 2 years service
- Suggested materials after 5 years service

Резьбовые соединения

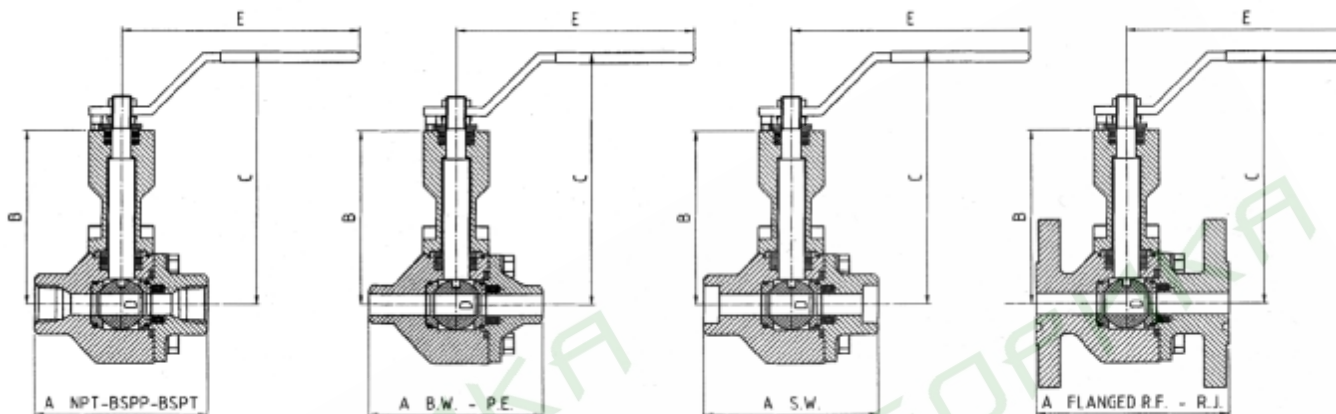
BSP Parallel: BS21Rp - ISO 228/1 - ISO 7/1Rp
 BSP Taper: BS21Rc - ISO 7/1Rc - DIN 2999/1
 NPT: ANSI B1 20.1

Соединения под приварку:

B.W. - PE.: ANSI B16.25 Sch. 40 - XS - 80 - 160
 S.W. ANSI B 16.11

Фланцы в соответствии с ASME/ANSI B 16.5

Строительные длины в соответствии с ASME /ANSI B16.10



РАЗМЕР КРАНА		ПОЛНЫЙ ПРОХОД										ISO 5211	ВЕС КГ/ФУНТ												
		A							B	C	D		E	ФЛАНЦЕВЫЕ											
		NPT BSP BSPT BW SW	150 RF	300 RF	300 RJ	600 RF	600 RJ	PN 10/100						NPT BSP BSPT BW/PE-SW	150 RF	300 RF - JR	600 RF - RJ	PN 16-40	PN 63	PN 100					
mm	DN8	106	-	-	-	-	-	-	-	-	106	160	13	193	F04	3.5	-	-	-	-	-	-	-	-	
Inch	1/4"	4.316"	-	-	-	-	-	-	-	-	4.17"	6.30"	51"	7.60"	F04	7.7"	-	-	-	-	-	-	-	-	-
mm	DN10	106	-	-	-	-	-	-	-	130	106	160	13	193	F04	3.5	-	-	-	-	5	6	6	6	6
Inch	3/8"	4.316"	-	-	-	-	-	-	5.1/8"	130	4.17"	6.30"	51"	7.60"	F04	7.7"	-	-	-	-	11	13.2	13.2	13.2	13.2
mm	DN15	106	140	140	151	165	163.5	130	106	160	106	160	13	193	F04	3.2	4.5	5	7	5	6	6	6	6	
Inch	1/2"	4.316"	5.1/2"	5.1/2"	5.15/16"	6.1/2"	6.7/16"	5.1/8"	4.17"	6.30"	51"	7.60"	13	193	F04	7"	9.9"	11"	15.4"	11"	13.2"	13.2"	13.2"	13.2"	13.2"
mm	DN20	110	152	152	165	191	191	150	110	165	110	165	19	193	F04	4.5	5.5	6.5	10.5	6.5	8.5	8.5	8.5	8.5	
Inch	3/4"	4.516"	6"	6"	6.1/2"	7.1/2"	7.1/2"	5.7/8"	4.33"	6.50"	75"	7.60"	19	193	F04	10"	12.1"	14.3"	23.1"	14.3"	18.7"	18.7"	18.7"	18.7"	18.7"
mm	DN25	127	165	165	178	216	216	160	117	183	25	222	19	193	F05	7	7.5	9	13.5	9	11	11	11	11	
Inch	1"	5"	6.1/2"	6.1/2"	7"	8.1/2"	8.1/2"	6.5/16"	4.60"	7.20"	1"	8.75"	19	193	F05	15.5"	16.5"	19.8"	29.8"	19.8"	24.2"	24.2"	24.2"	24.2"	
mm	DN32	180	178	178	191	229	229	180	152	235	38	365	25	222	F07	11	13	15	25.5	15	23.5	23.5	23.5	23.5	
Inch	1.1/4"	7.1/8"	7"	7"	7.1/2"	9"	9"	7.1/8"	6"	9.25"	1.5"	14.4"	25	222	F07	24"	28.6"	33"	56"	33"	52"	52"	52"	52"	
mm	DN40	180	191	191	203	241	241	200	152	235	38	365	25	222	F07	11	14	17	28	17.5	25.5	25.5	25.5	25.5	
Inch	1.1/2"	7.1/8"	7.1/2"	7.1/2"	8"	9.1/2"	9.1/2"	8.1/4"	6"	9.25"	1.5"	14.4"	25	222	F07	24"	30.8"	37.5"	62"	38.6"	56.2"	56.2"	56.2"	56.2"	
mm	DN50	216	216	216	232	292	295	230	167	-	50	-	-	-	F07	16	20	24	34	25	30	30	30	30	
Inch	2"	8.1/2"	8.1/2"	8.1/2"	9.1/8"	11.1/2"	11.5/8"	9.1/16"	6.57"	-	1.97"	-	-	-	F07	35"	44"	53"	75"	55"	66"	66"	66"	66"	

РАЗМЕР КРАНА		НЕПОЛНЫЙ ПРОХОД										ISO 5211	ВЕС КГ/ФУНТ											
		A							B	C	D		E	ФЛАНЦЕВЫЕ										
		NPT BSP BSPT BW SW	150 RF	300 RF	300 RJ	600 RF	600 RJ	PN 10/100						NPT BSP BSPT BW/PE-SW	150 RF	300 RF - JR	600 RF - RJ	PN 16-40	PN 63	PN 100				
mm	DN20	106	152	152	165	191	191	150	106	160	13	193	19	193	F04	3.2	5	6	8	6	7	7	7	7
Inch	3/4"	4.316"	6"	6"	6.1/2"	7.1/2"	7.1/2"	5.7/8"	4.17"	6.30"	51"	7.60"	19	193	F04	7"	11"	13.2"	17.6"	13.2"	15.4"	15.4"	15.4"	15.4"
mm	DN25	110	165	165	178	216	216	160	110	165	19	193	19	193	F04	4.5	6	7.5	12.5	7.5	9.5	9.5	9.5	9.5
Inch	1"	4.516"	6.1/2"	6.1/2"	7"	8.1/2"	8.1/2"	6.5/16"	4.33"	6.50"	75"	7.60"	19	193	F04	10"	13.2"	16.5"	27.5"	16.5"	21"	21"	21"	21"
mm	DN32	127	178	178	191	229	229	180	117	183	25	222	25	222	F05	7	8.5	11	15	11	13	13	13	13
Inch	1.1/4"	5"	7"	7"	7.1/2"	9"	9"	7.1/8"	4.60"	7.20"	1"	8.75"	25	222	F05	15.5"	18.7"	24.2"	33"	24.2"	28.6"	28.6"	28.6"	28.6"
mm	DN40	180	191	191	203	241	241	200	152	235	38	365	25	222	F07	11	14	17	28	17.5	25	25	25	25
Inch	1.1/2"	7.1/8"	7.1/2"	7.1/2"	8"	9.1/2"	9.1/2"	8.1/4"	6"	9.25"	1.5"	14.4"	25	222	F07	24"	30.8"	37.5"	62"	38.6"	55"	55"	55"	55"
mm	DN50	180	216	216	232	292	295	230	152	235	38	365	25	222	F07	11	17	21	36	22	28	28	28	28
Inch	2"	7.1/8"	8.1/2"	8.1/2"	9.1/8"	11.1/2"	11.5/8"	9.1/16"	6"	9.25"	1.5"	14.4"	25	222	F07	24"	37.5"	46.3"	79.4"	48.5"	62"	62"	62"	62"
mm	DN80	216	283	283	298	356	359	310	152	-	38	-	-	-	F07	16	28	32	44	34	36	36	36	36
Inch	3"	8.1/2"	11.1/8"	11.1/8"	11.3/4"	14"	14.1/8"	12.3/16"	6"	-	1.5"	-	-	-	F07	35"	62"	71"	97"	75"	80"	80"	80"	80"